
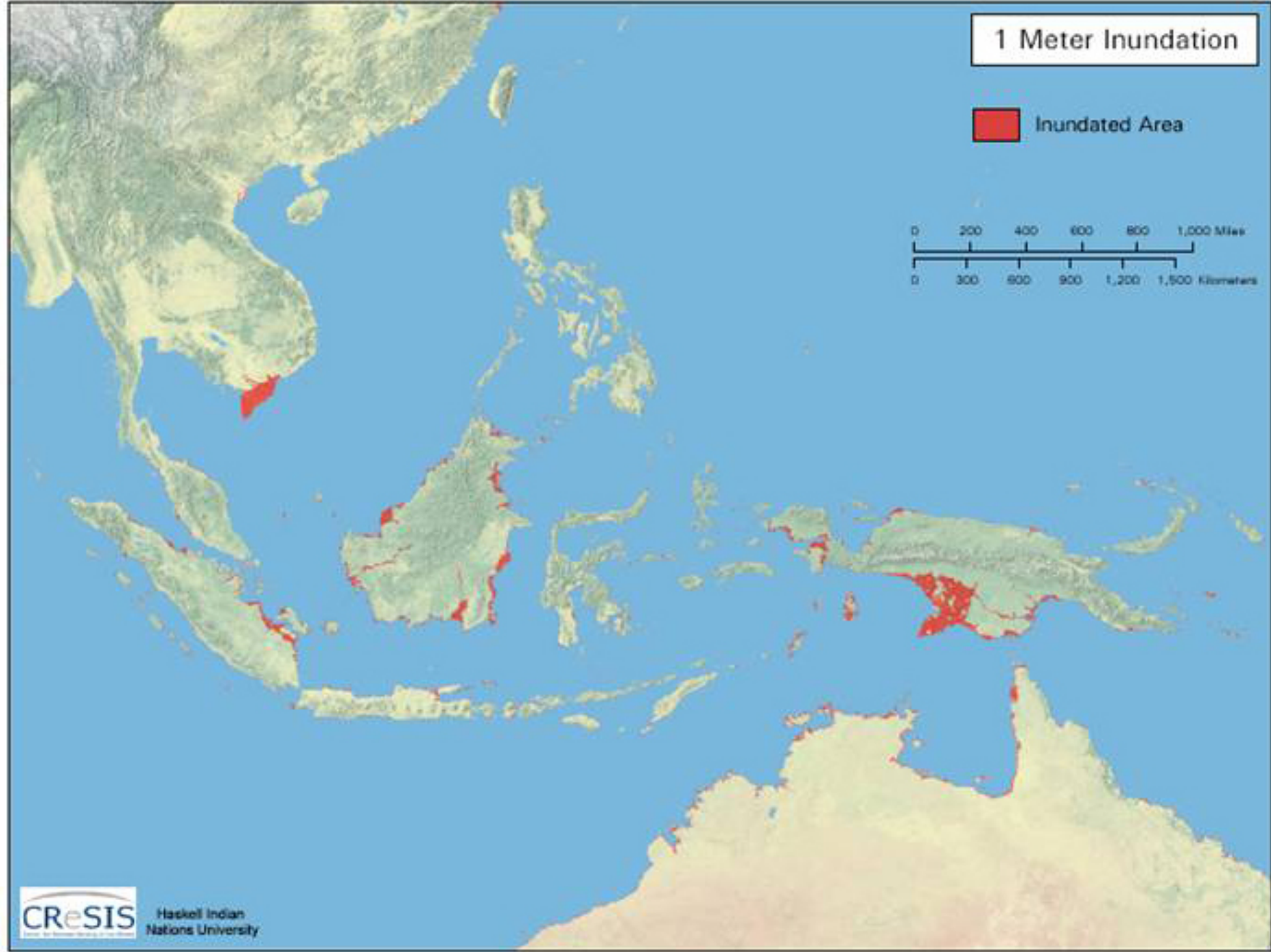
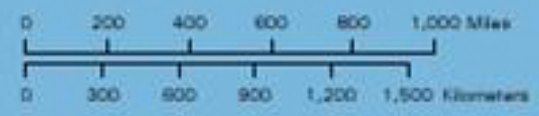


**Resisting Agribusiness
Development:
The Merauke Integrated
Food and Energy Estate
in West Papua,
Indonesia.**

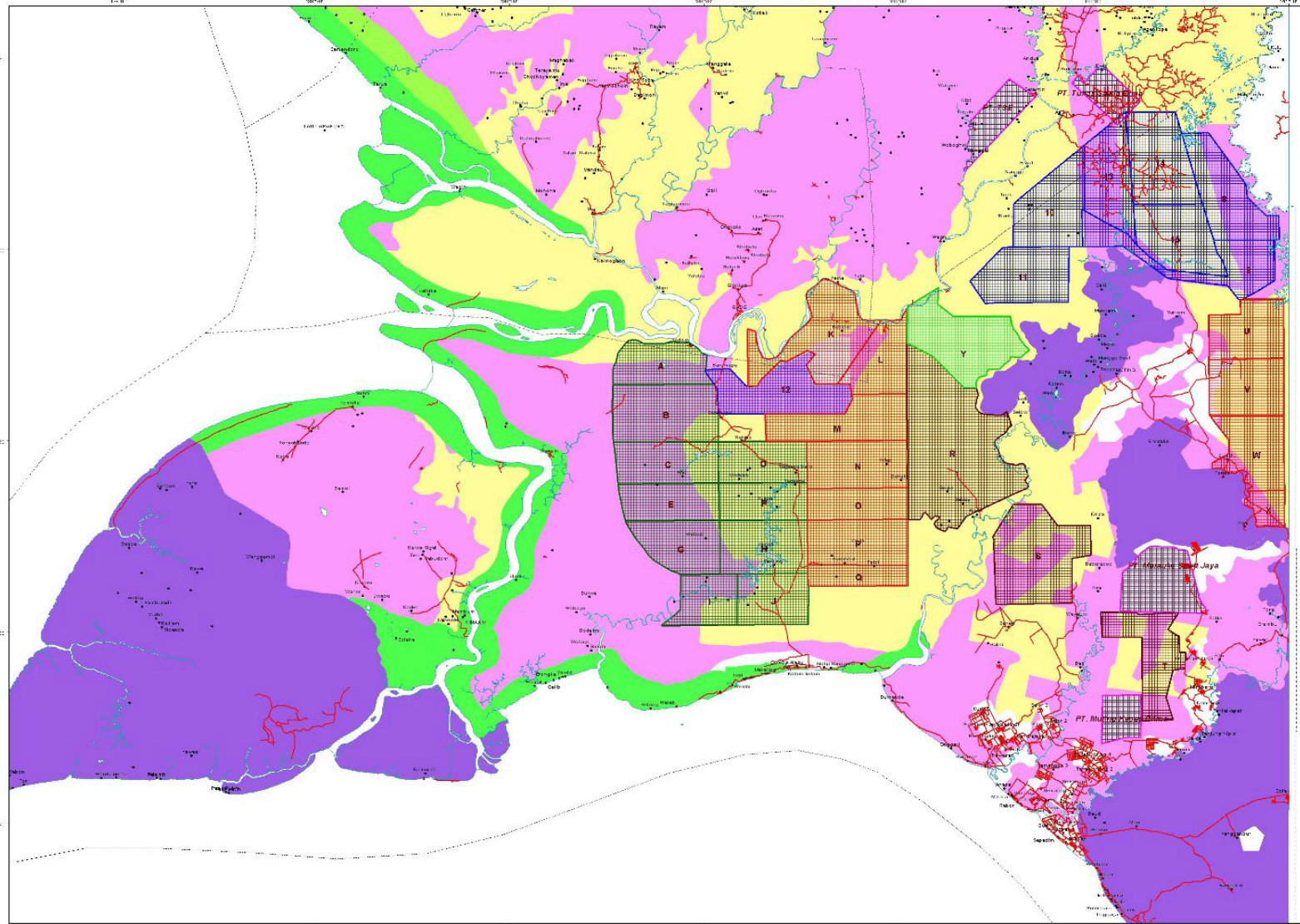
Longgena Ginting, WALHI/FoE Indonesia
Oliver Pye, Bonn University

1 Meter Inundation

 Inundated Area



PETA RENCANA INVESTASI DI KABUPATEN MERAUKE



**PETA PERMOHONAN RENCANA INVESTASI
AREAL PERKUBUNAN PADA KAWASAN HUTAN
KABUPATEN MERAUKE
SKALA 1 : 200.000**

U

SINAR MAS GRUP

SI	PT. SINTIA REALTI SELILANG	20.000 Ha
SI	PT. SIKORA BUKIT PASADA	40.000 Ha
SI	PT. CUPA KHALSI AJADI	25.000 Ha
SI	PT. GARIBUSI BUNDA MANDIRI	30.000 Ha
SI	PT. DALABANG INI HUBARA	25.000 Ha
SI	PT. PERIA MULLA INI PERUSAHA	22.000 Ha
SI	PT. INTI ALAM SELAMATEKA	22.000 Ha
SI	PT. URABA PUNDA RUSA BILASIA	20.000 Ha
SI	PT. CITRA MUNDALA SI TANGA	20.000 Ha
SI	PT. INTI GORAN BANGUN PERUSAHA	30.000 Ha
325.000 Ha		

SELINTING GRUP

SI	PT. PUSPATI RATA PERMAN	52.000 Ha
SI	PT. FERDIA BARATI PERUSAHA	20.000 Ha
SI	PT. TANABIRI BIOFULSE	48.000 Ha
SI	PT. HAMPARAN HULAI CEMERLANG	20.000 Ha
SI	PT. JAYA RAYA PERKASA	26.000 Ha
SI	PT. FERDIA HULAI KEKAWA	32.000 Ha
SI	PT. NABATI PUSDA KENCANA	17.000 Ha
SI	PT. RAJA SURKESI SI STARTI	33.000 Ha
SI	PT. HAMPARAN PADANG HULAI	33.000 Ha
SI	PT. ENTRA PE RUSA GEBILANG	34.000 Ha
SI	PT. NABATI PUSDA KENCANA	10.000 Ha
292.000 Ha		

KENTING HULAI GRUP

SI	PT. ENDING MEKAR HULAI	113.000 Ha
SI	PT. ENDING MEKAR HULAI	61.000 Ha
SI	PT. ENDING MEKAR HULAI	75.000 Ha
249.000 Ha		

RAJAWALI GRUP

SI	PT. RAJAWALI	51.000 Ha
51.000 Ha		

KAWASAN YANG SUDAH DIPLEPASSKAN

KETERANGAN

- MELUK PANGGUBBAR LARI
- HUTAN LINDUNG
- HUTAN PRODUKSI
- HUTAN PRODUKSI KONVERSI
- HUTAN PRODUKSI TERBATAS
- HUTAN KONSERVASI

▲ JALAN
— BATAS AIR DAM DAPAT
● HUKUS ADMINISTRASI RENCANA KHUSUS PAKEM
— BAWANG

DAFTAR RENCANA INVESTASI

1. "KAWASAN" - "AREAL" PERUSAHA - 200.000
2. "KAWASAN" - "AREAL" PERUSAHA - 200.000
3. "KAWASAN" - "AREAL" PERUSAHA - 200.000
4. "KAWASAN" - "AREAL" PERUSAHA - 200.000
5. "KAWASAN" - "AREAL" PERUSAHA - 200.000

DIBINA OLEH PT.
INDONESIA KAWASAN HULAI BAKI

GEORAFIS

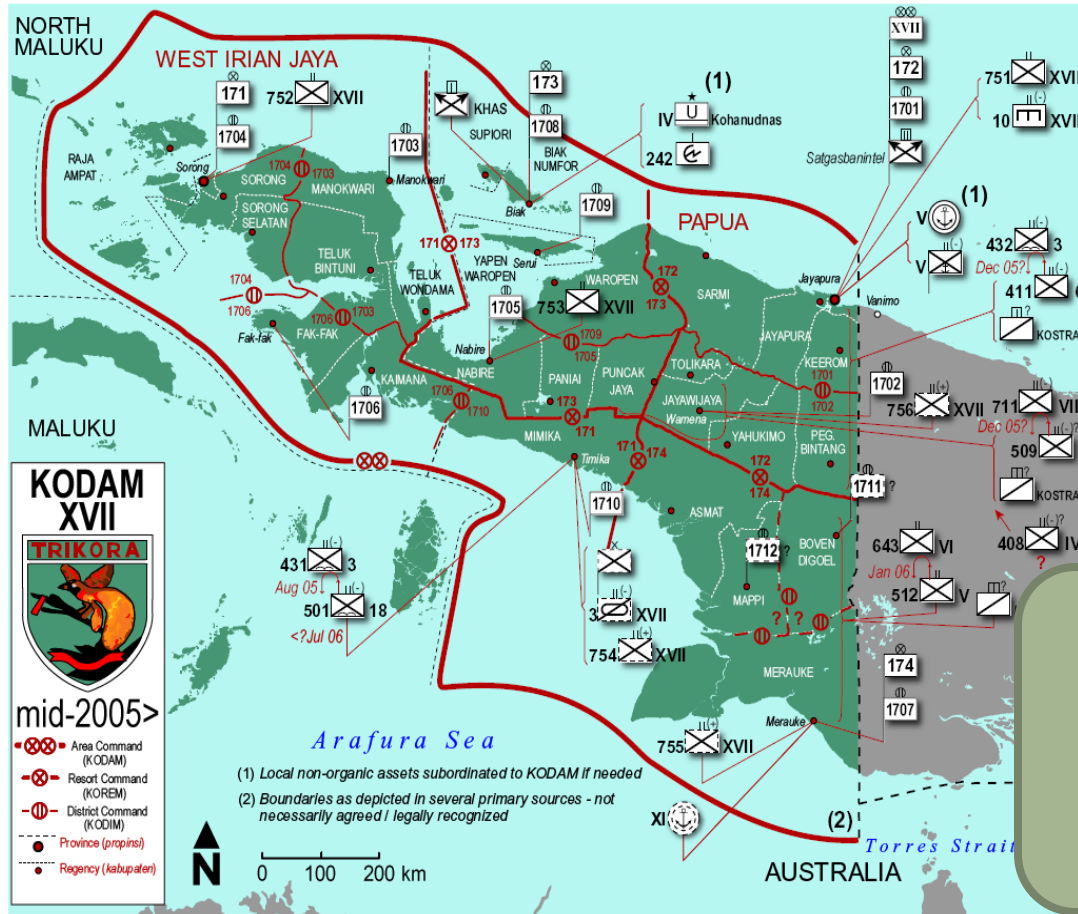
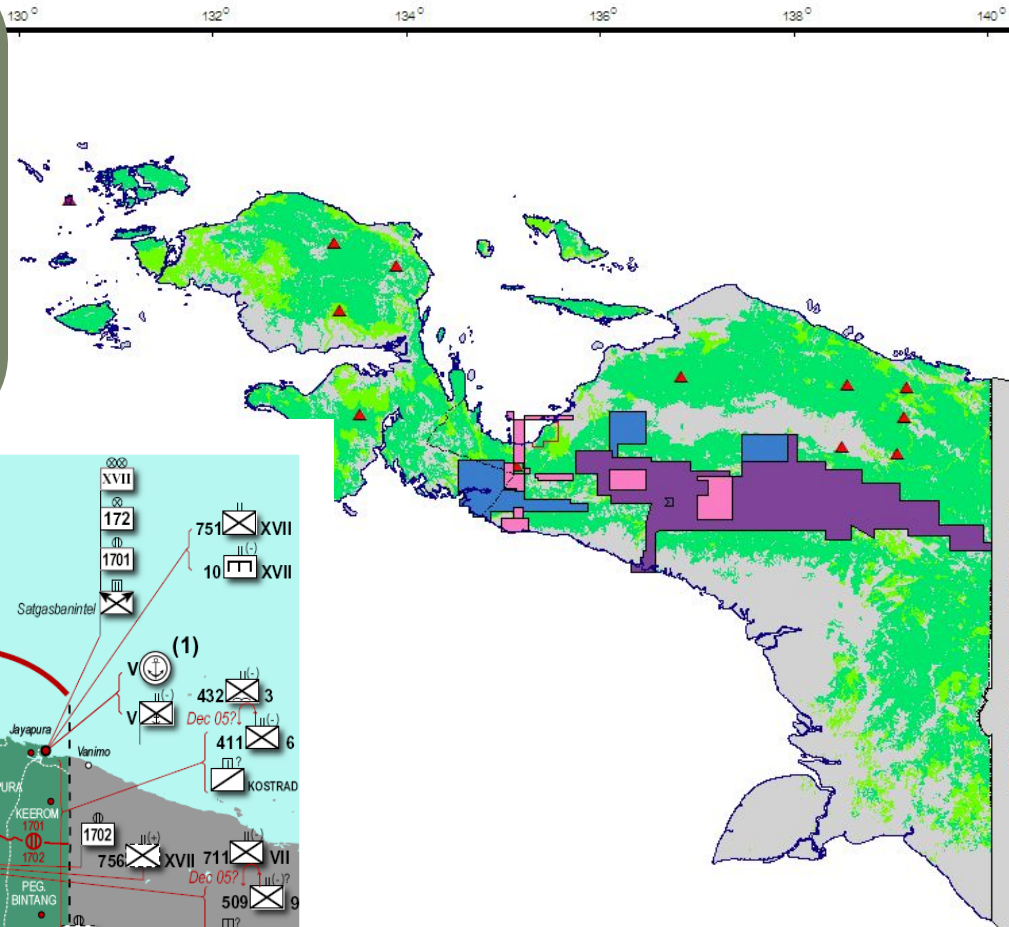
MENYUSUN OLEH
GUBERNUR PROVINSI PAPUA

BORNEO SUREBU

Papuan Specifics:

- Military occupation
- Freeport Grasberg Mine

p 1
 onesian
 tary (TNI)
 mands, bases
 eployed units
 West Papua



• Transmigration

7 WILAYAH ADAT PAPUA

Civil Society Coalition against MIFEE:

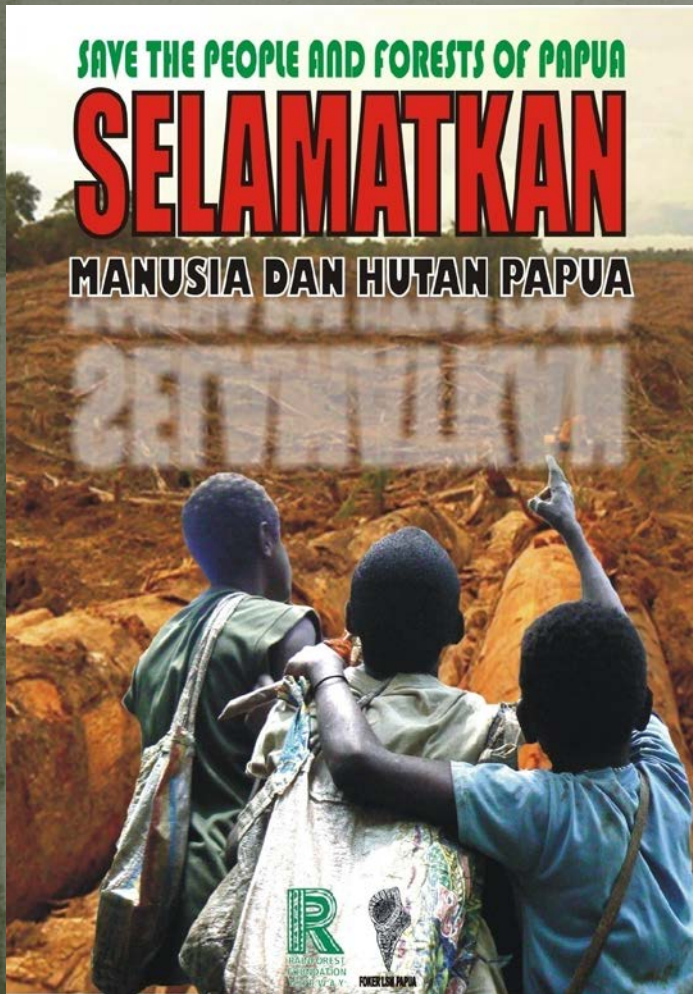
- Foker LSM Papua (e.g. YASANTO)
- Church organisations (e.g. SKP KAM)
- AMAN
- Student activists (SORPATOM)
- National organisations (WALHI, Sawit Watch)
- Think tanks (e.g. PUSAKA)

Indigenous Resistance:

- Local dissatisfaction
- Papuan Adat Council of Region V (Ha-Anim)
- *Aliansi Masyarakat Adat Nusantara*, AMAN



3 Counter Narratives



1. Indigenous peoples living with the forest
2. Papuan independence against occupation and exploitation
3. Land reform and food sovereignty against agribusiness

Strategic Questions in Resisting MIFEE

1. The Forest Option

Potential: State rift around zoning, REDD as alternative development scenario

Risk: military-logging-connection; greenwash; carbon markets

2. The Autonomy/Independence default mode

Potential: part of broader struggle , ,international solidarity structures, political potential

Risk: independence struggle doesn't work; transmigrants,;“racial territorialisation” (Peluso)

3. Land reform and food sovereignty

Potential: part of national (SPI, WALHI) and international struggle for land reform and food sovereignty, could plug into land grab networks

Risk: no SPI or WALHI groups in Papua; concrete meaning in Merauke?

Conclusions

- Default resistance modes do not always fit
- New types of alliances are emerging but these need to reinvent strategies in creative dispute with each other
- Crucial question of migrant farmers and workers
- What does land reform and food sovereignty mean in this context (ethnicity-class)?

Bencana Kependudukan di Tanah Papua

Tahun	Jumlah penduduk		Total Penduduk	% Comparison		annual growth Rate	
	Papuan	Non Papuan		Papuan	Non papuan	Papuan	Non Papuan
1971	887,000.00	36,000.00	923,000.00	96%	4%	1.67%	10.5%
1990	1,215,897.00	414,210.00	1,630,107.00	75%	25%		
2005	1,558,795.00	1,087,694.00	2,646,489.00	59%	41%		
2011	1,700,000.00	1,980,000.00	3,680,000.00	47%	55%		
2020	1,956,400.00	4,743,600.00	6,700,000.00	29.2%	70.8%		
2030	2,371,200.00	13,228,800.00	15,600,000.00	15.2%	84.80%		

Source : Dr. Jims Elimsli, from Sidney University of Australia

